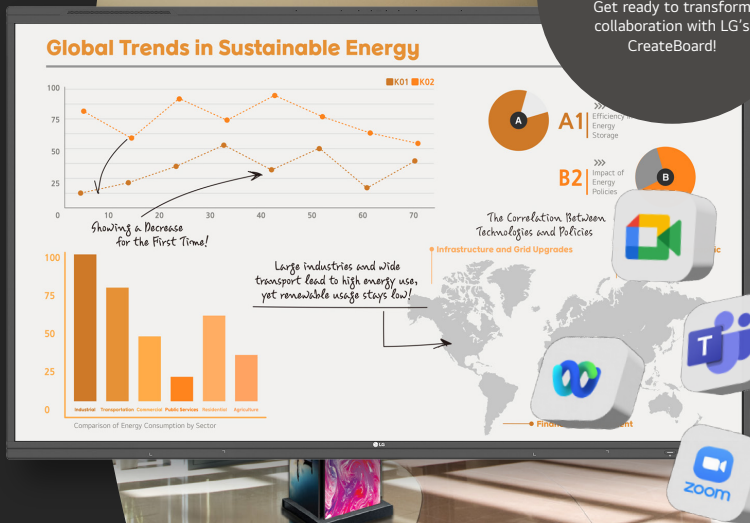




# Start The Year Off Right!

Enhance meetings, presentations, and team collaboration with cutting-edge LG CreateBoards

65" LG CreateBoard (65TR3DK)  
- LIMITED SUPPLY!  
Get ready to transform collaboration with LG's CreateBoard!



## Our Gift To You:

Free Mobile Cart (ST-000F) with  
purchase - \$467 value!

## A Better Workspace With LG CreateBoard Gen 2:

LG CreateBoard® is an interactive solution built to enhance corporate connectivity, collaboration and security. Immensely more than just a whiteboarding tool, the CreateBoard works effortlessly in any OS environment

**Effortless Collaboration:** Teamwork is simplified with wireless casting, easy screen share and built-in collaboration software.

**Seamless Connectivity:** Easily connect devices with USB-C, HDMI, and wireless options.

**Smart Integration:** Compatible with any OS environment whether you are Chrome, Windows or Apple organization. The OPS slot system allows for simplified deployment and content sharing.

## Don't miss this exclusive deal!

Request your quote today and secure your 65" LG CreateBoard while supplies last.

**Contact your TD Synnex team NOW!**

### Terms and Conditions:

- While supplies last.
- This promotion is valid only on orders valid on orders placed before 3/31/2025.
- For every 65TR3DK sold, Sales can request one Free of Charge Non-return Sample of a Mobile Cart (ST-000F) through the Sample Portal.
- Please attach proof of sale (Sell-Out) when requesting through the Sample Portal as the sample must go to an end-user who's buying the 65TR3DK.

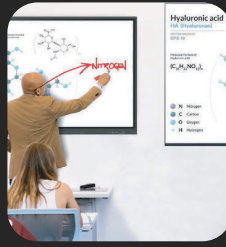
## Features:



**4K Ultra HD Resolution**  
for crisp, clear visuals.



**Amazing Sound**  
Powerful speakers ensure clear audio, capturing student's attention and making content accessible for full participation in classroom discussions and activities.



**Up To 40-Point Multi-Touch Capability**  
for interactive collaboration.



**Powerful DMS Software**  
LG ConnectedCare™ DMS is our solution for remotely monitoring, controlling, and managing in any environment.



**Built-In Screen Sharing**  
Share to streamline presentations and brainstorming.

## Fits Perfectly Anywhere:

The CreateBoard can be used in a variety of corporate settings, from team brainstorming sessions and project planning meetings to strategy workshops and client presentations. Its versatility makes it ideal for offices, remote work environments, collaborative spaces, and even cross-functional team collaborations, helping to enhance productivity and foster creative problem-solving across the organization.

- Corporate conference room – small, medium and large.
- Meeting Rooms.
- Training Rooms.



- Boardrooms.
- Innovation Labs or Think Tanks.

- Executive Offices.
- Collaborative Workspaces/Design Review.

